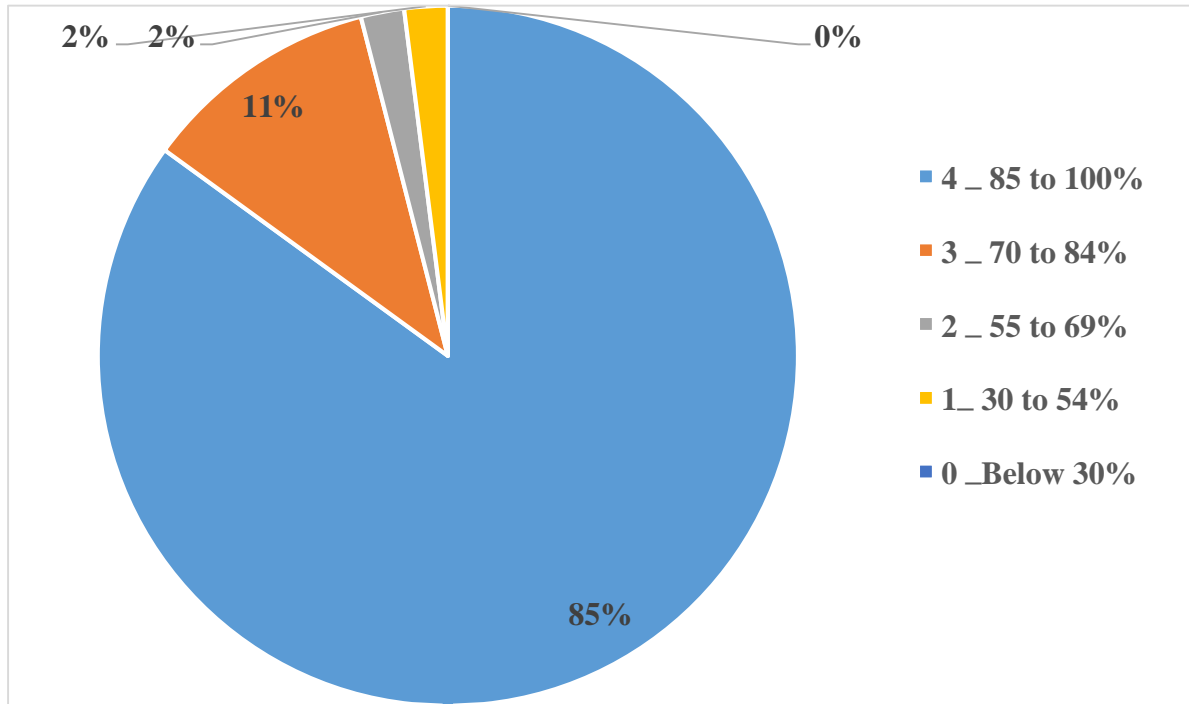
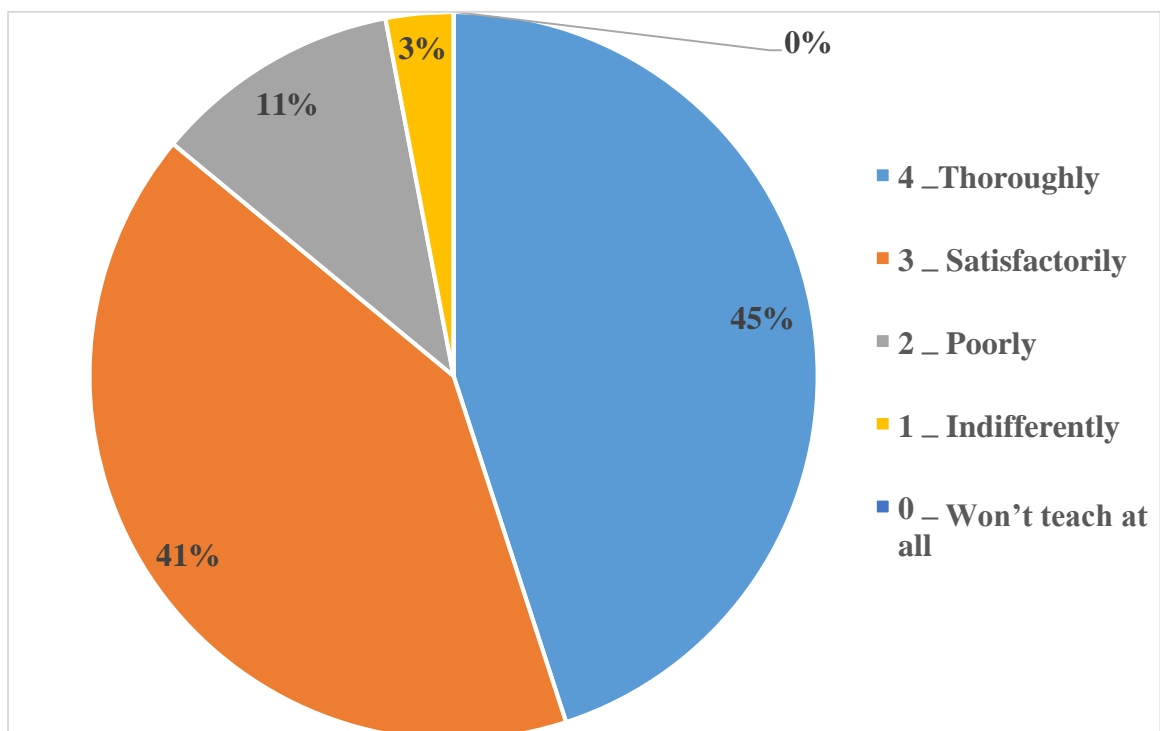


**Rayat Shikshan Sanstha's  
Abasaheb Marathe Arts and New Commerce, Science College, Rajapur  
Analysis of Student Satisfaction Survey-2021-22**

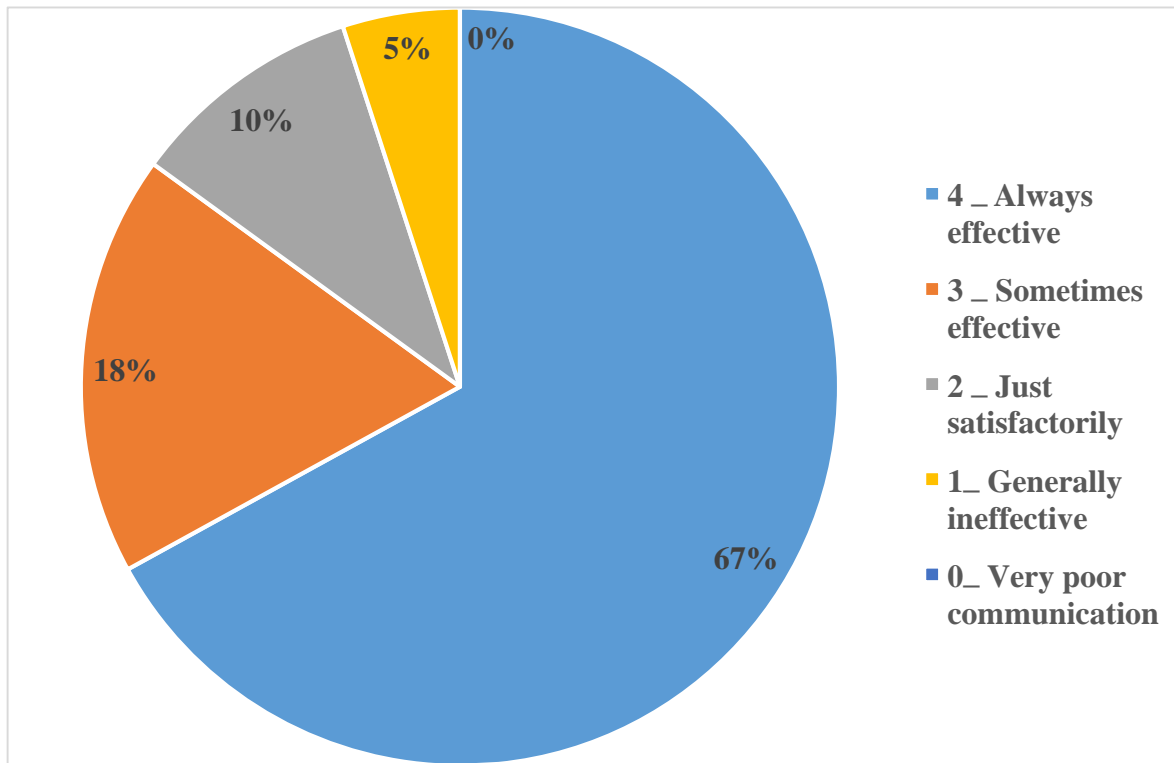
**1. Syllabus Completion:**



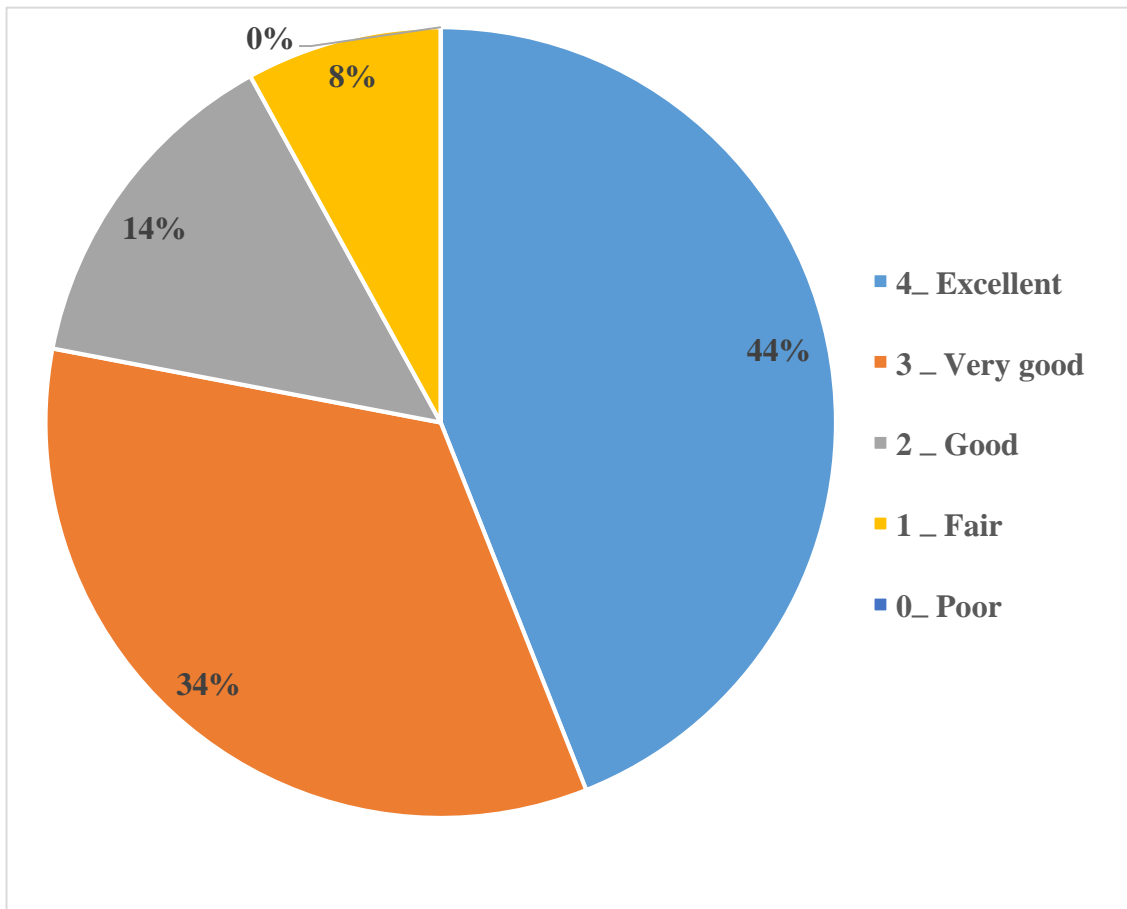
**2. Teachers' Preparation for the class:**



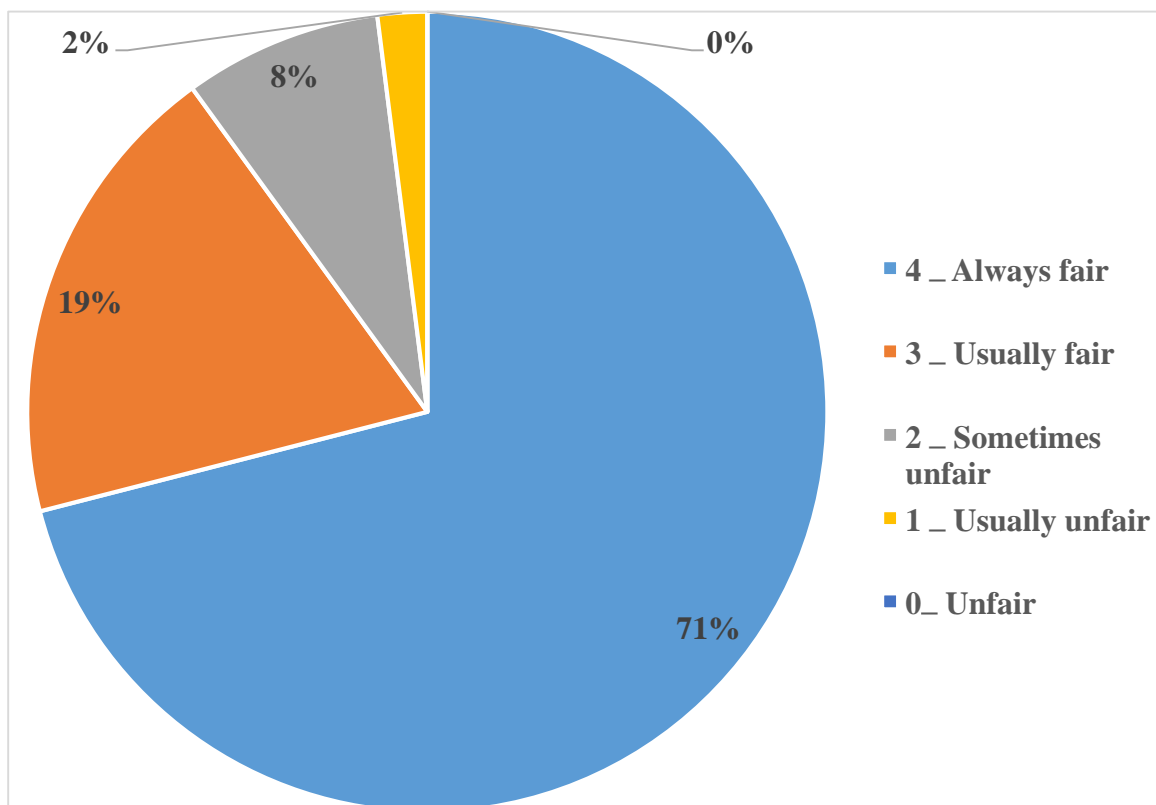
3. Teachers' Communication in the class:



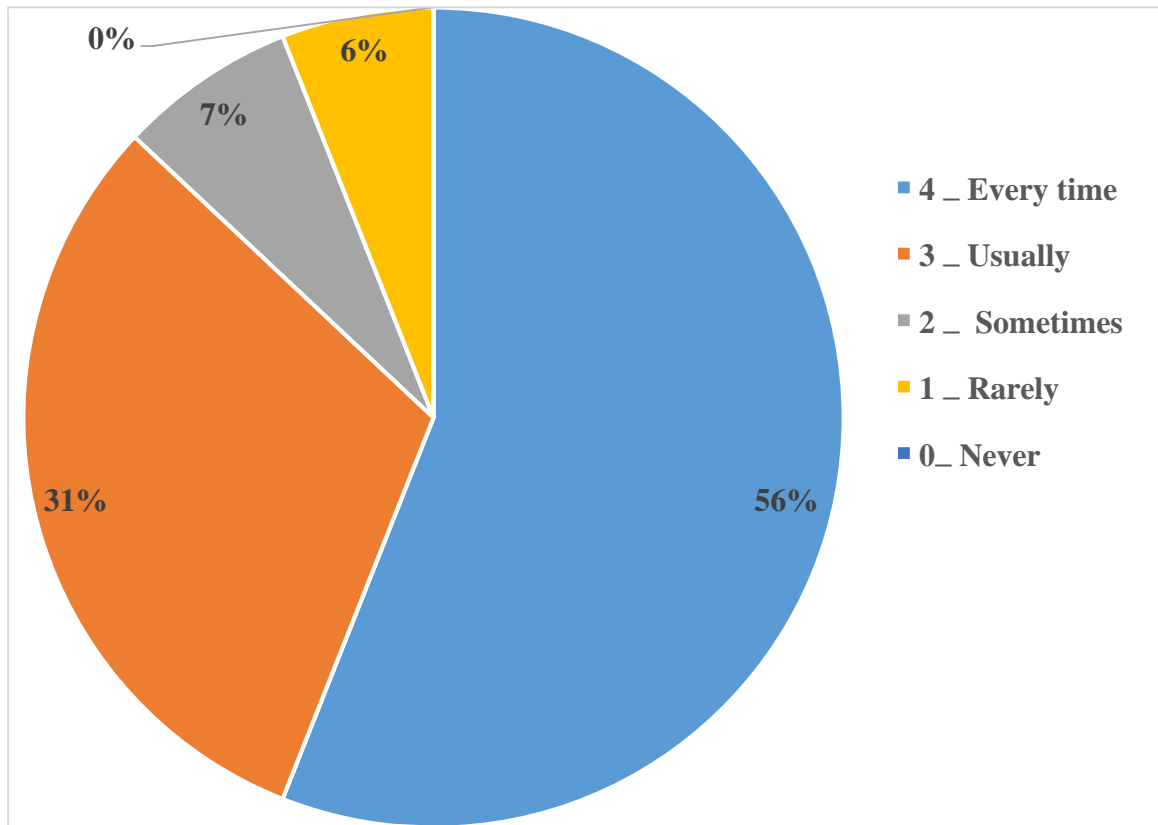
#### 4. Approach of Teachers towards Teaching:



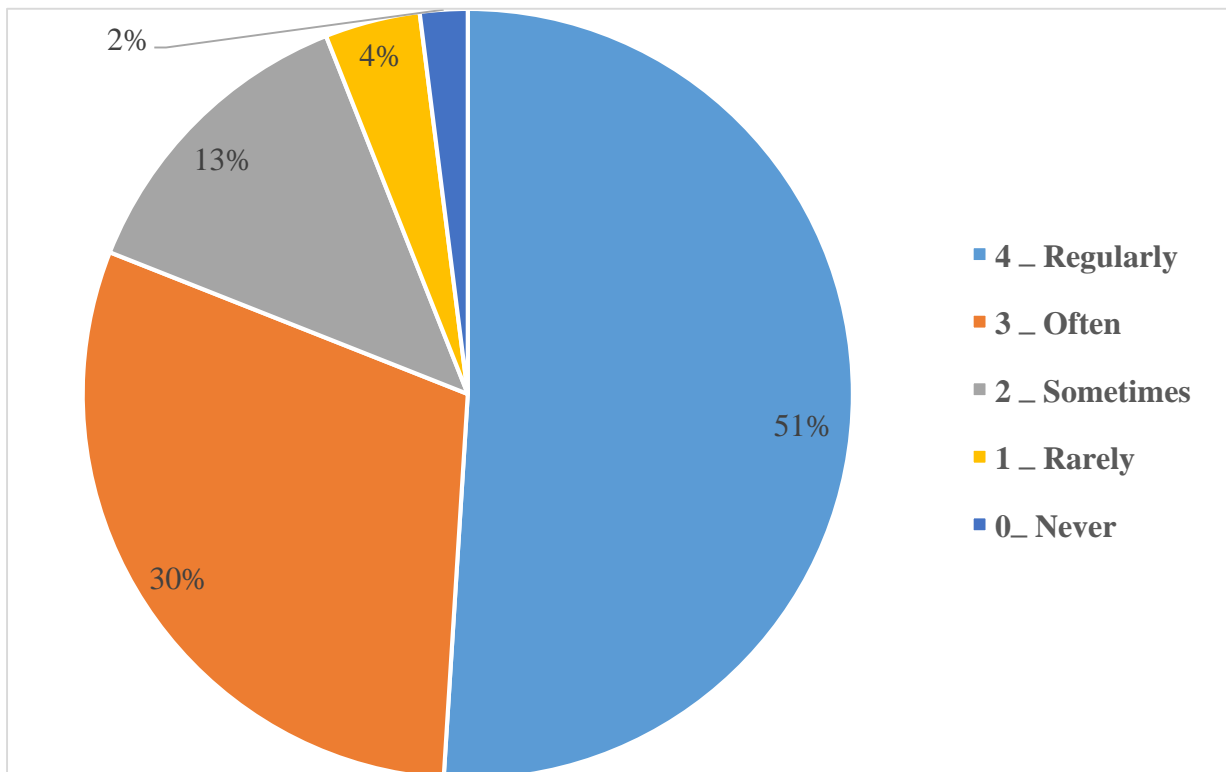
#### 5. Fairness of Internal Evaluation Process:



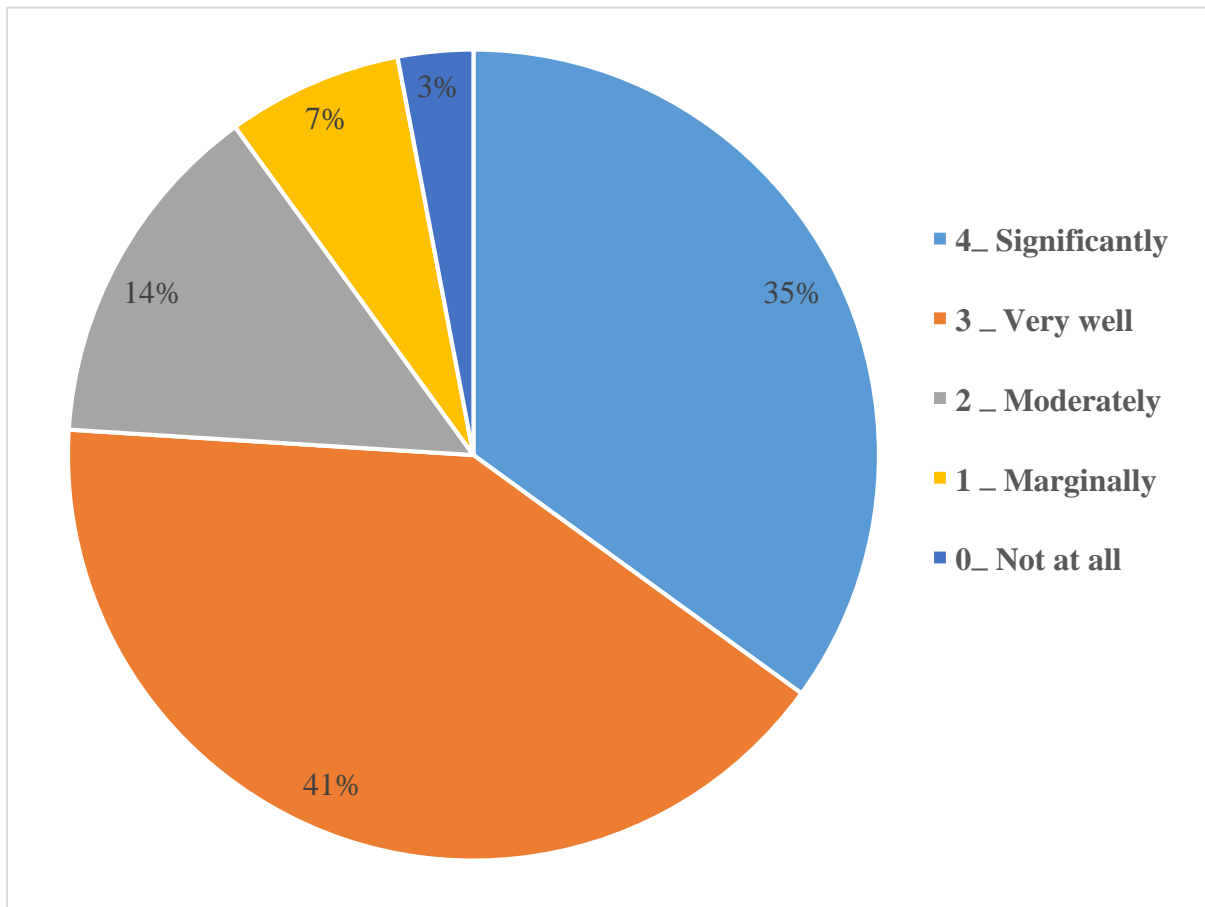
6. Assignment Performance Discussion:

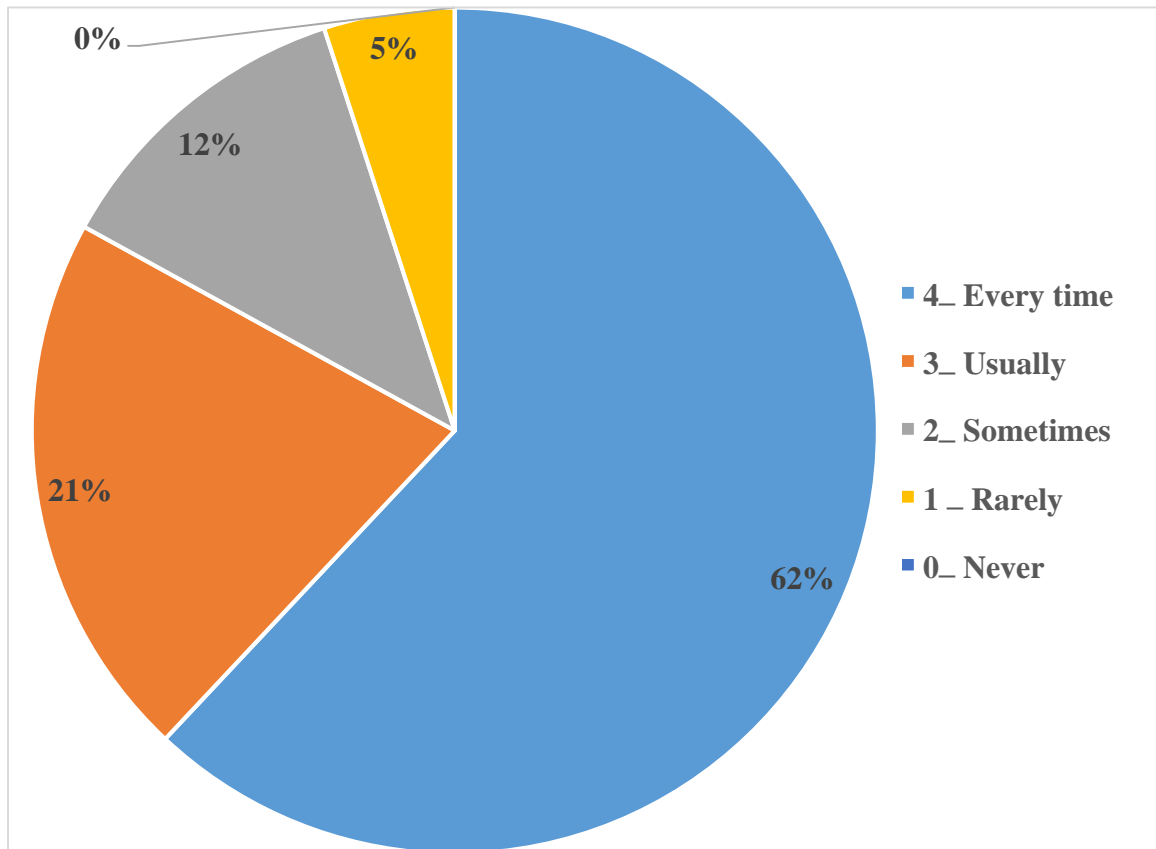


7. Active interest in promoting internship, student exchange, field visit for students

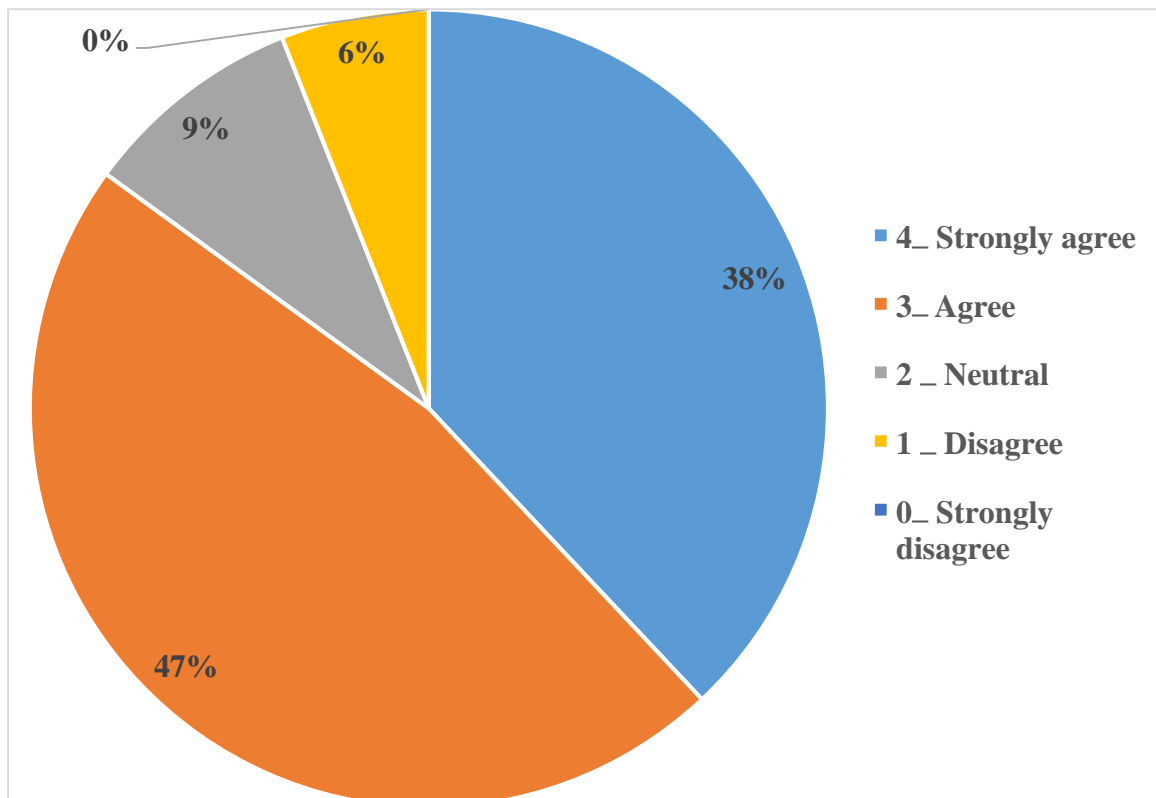


8. The teaching and mentoring process for cognitive, social and emotional growth:



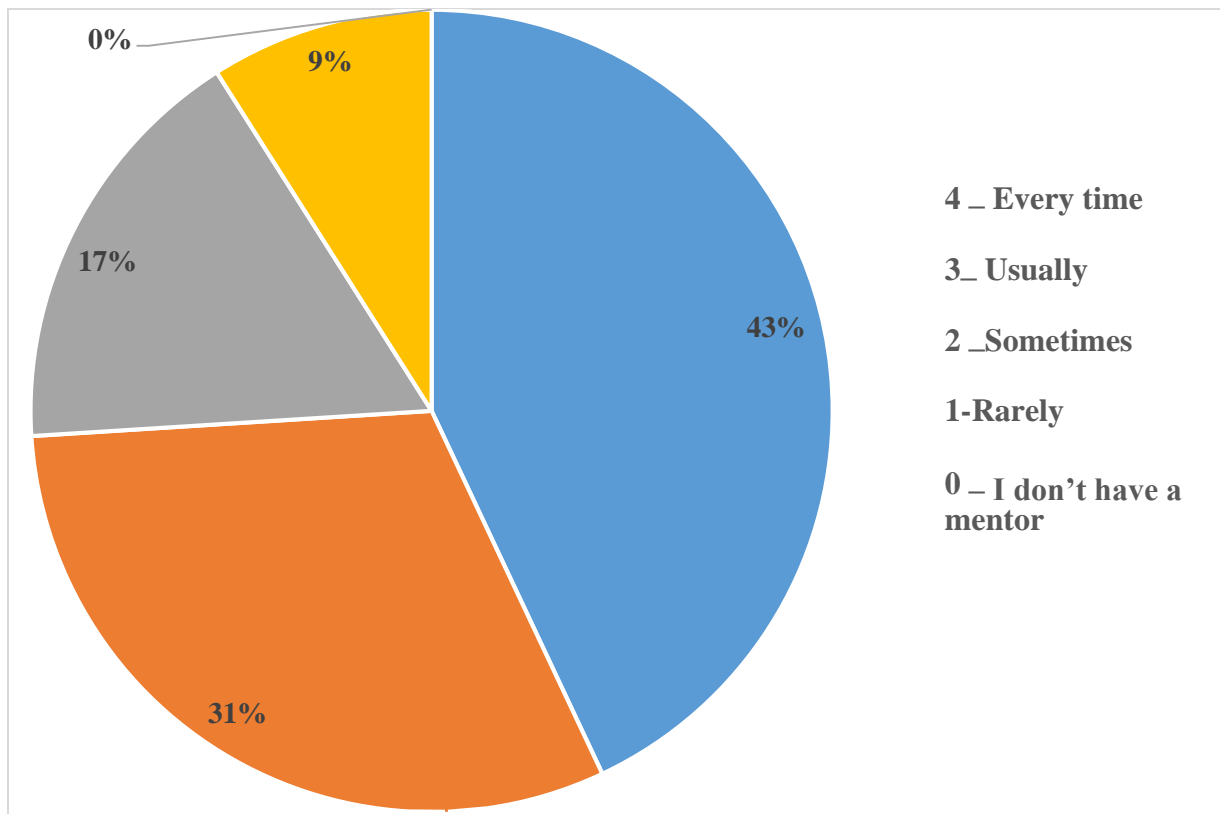


9. Provision of multiple opportunities to learn and grow :

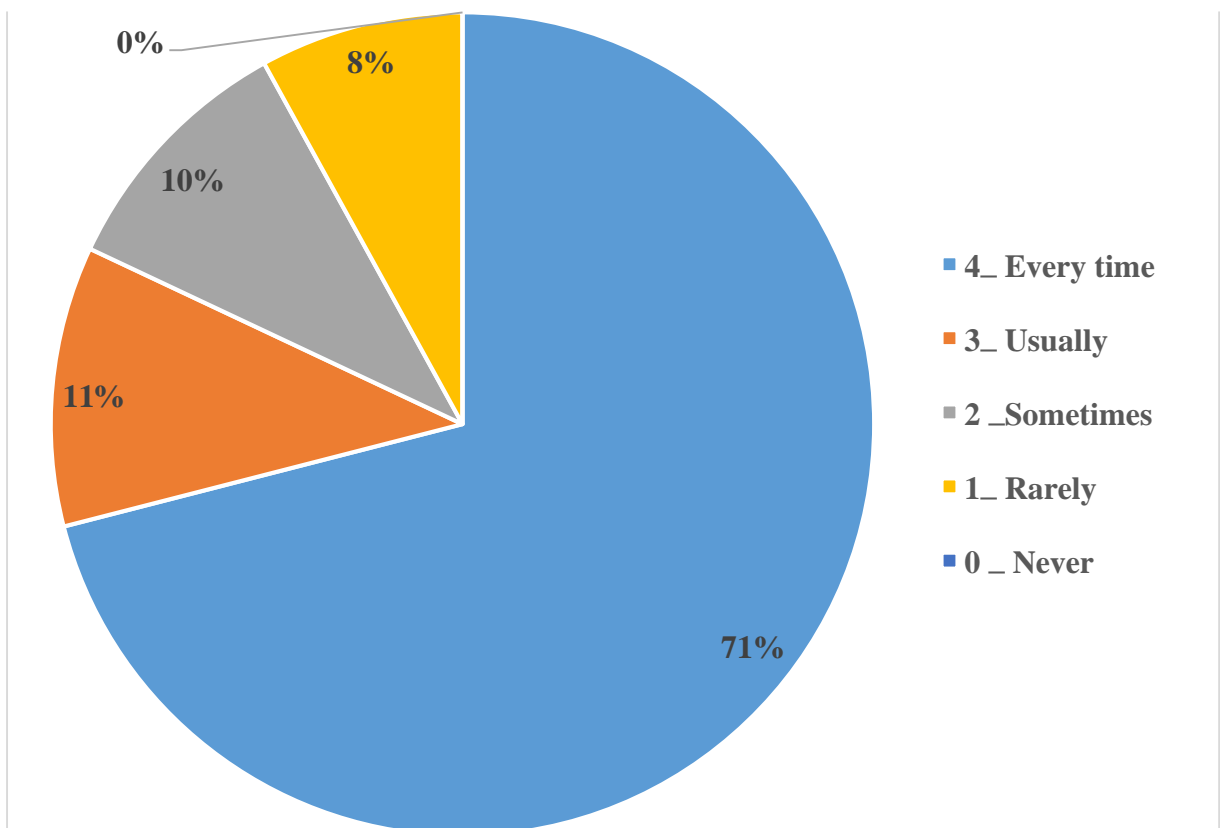


10. Information about expected competencies, course outcomes and programme outcomes:

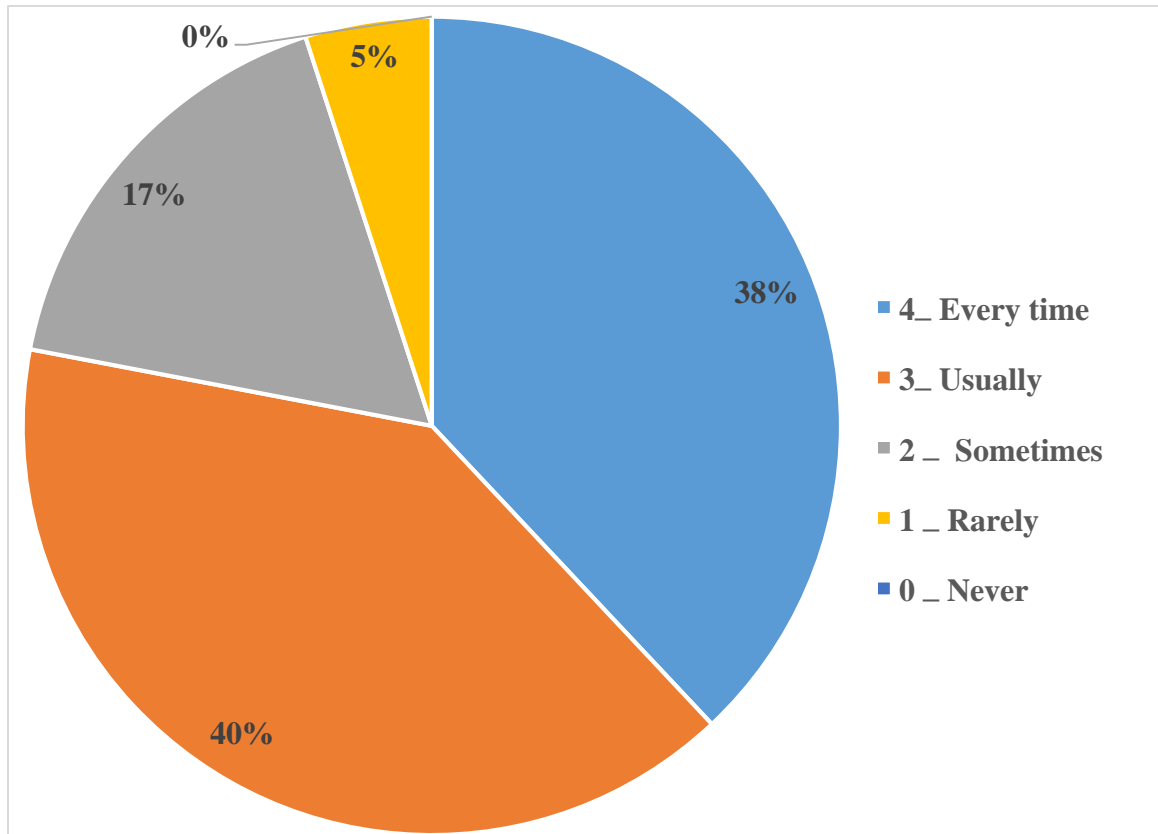
11. Necessary follow-up with an assigned task:



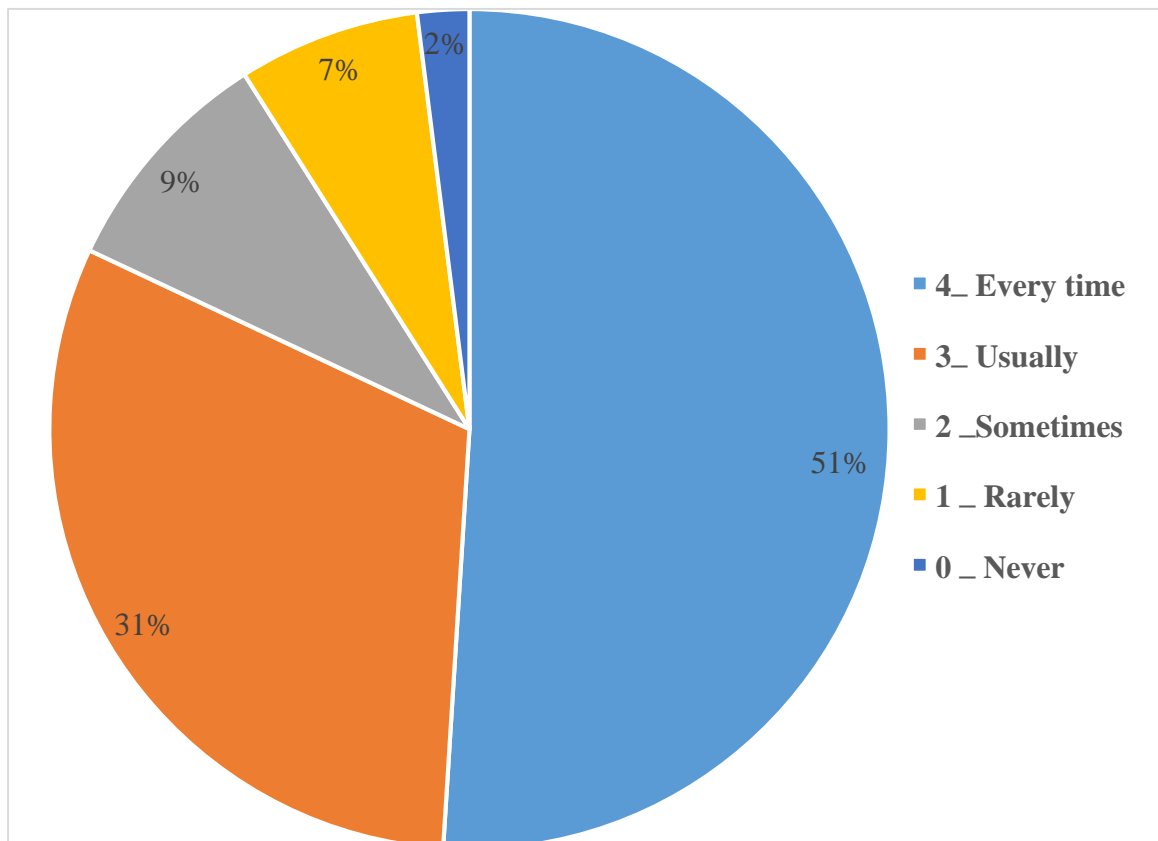
12. Illustration of the concepts through examples and applications:



13. Identification of strengths and encouragement by providing right level of challenges:

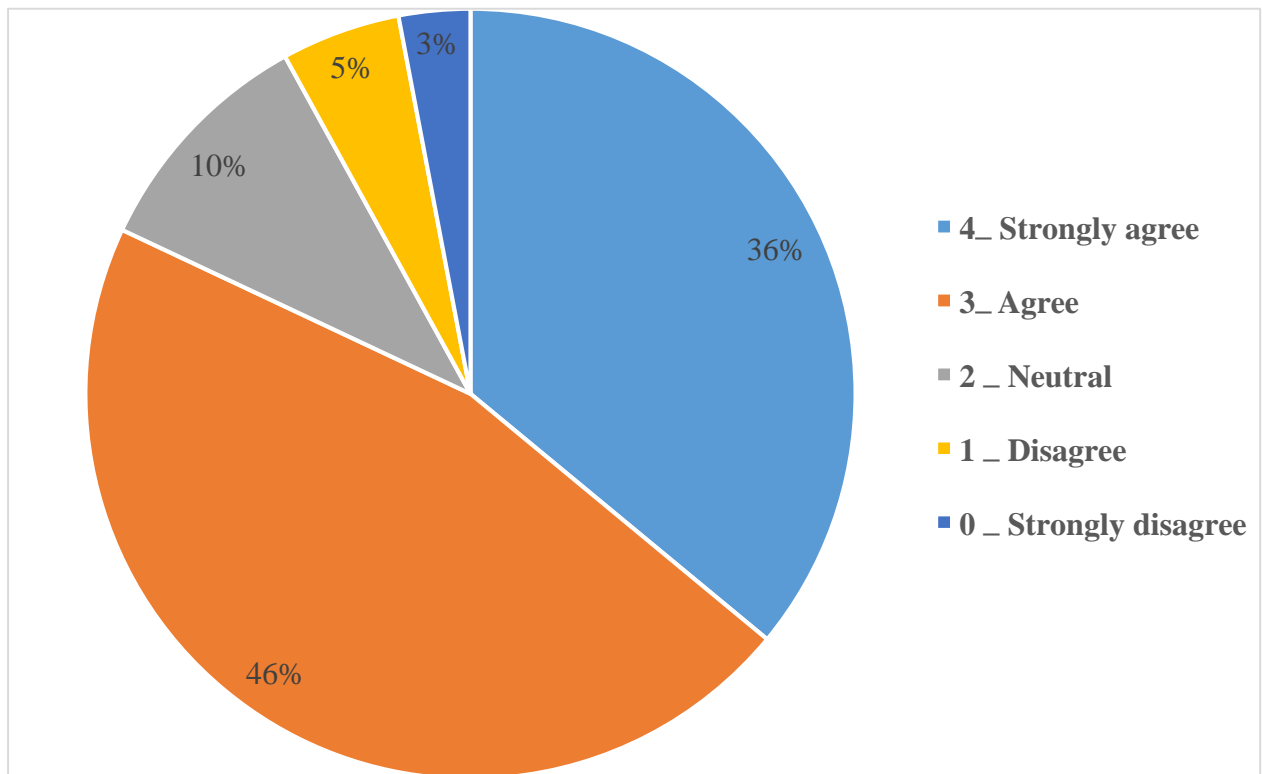


14. Identification of weaknesses and help to overcome them:

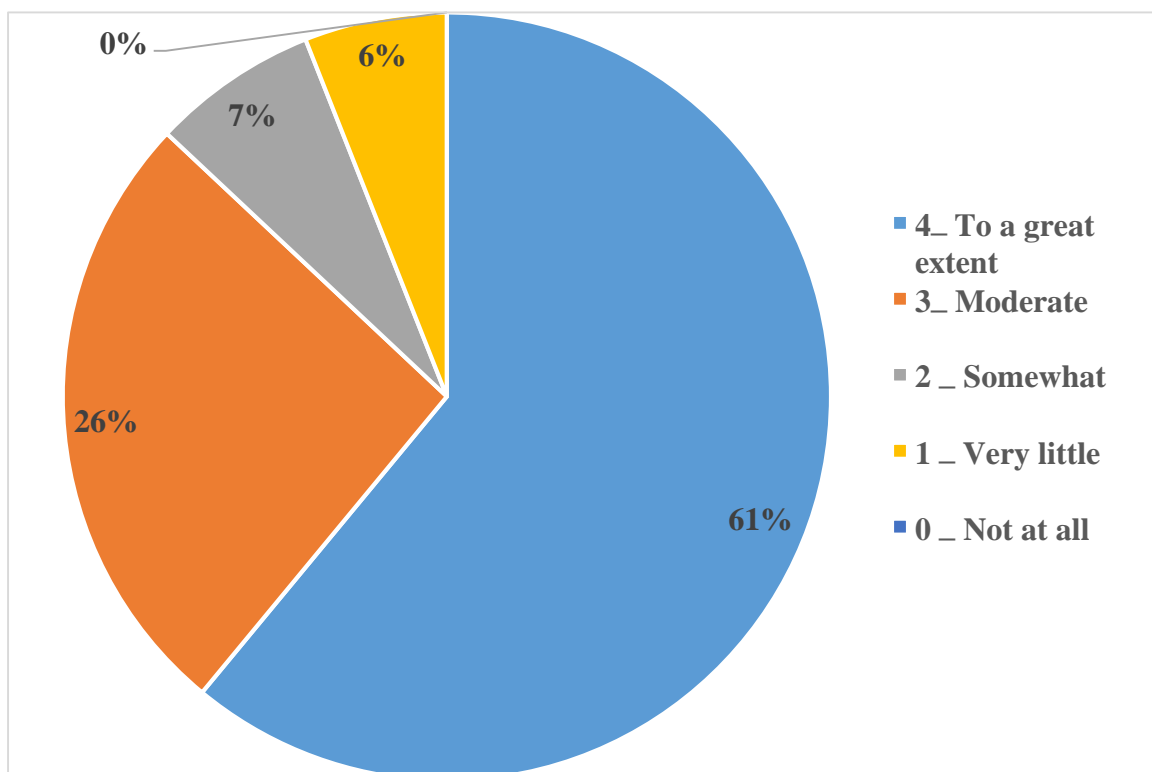




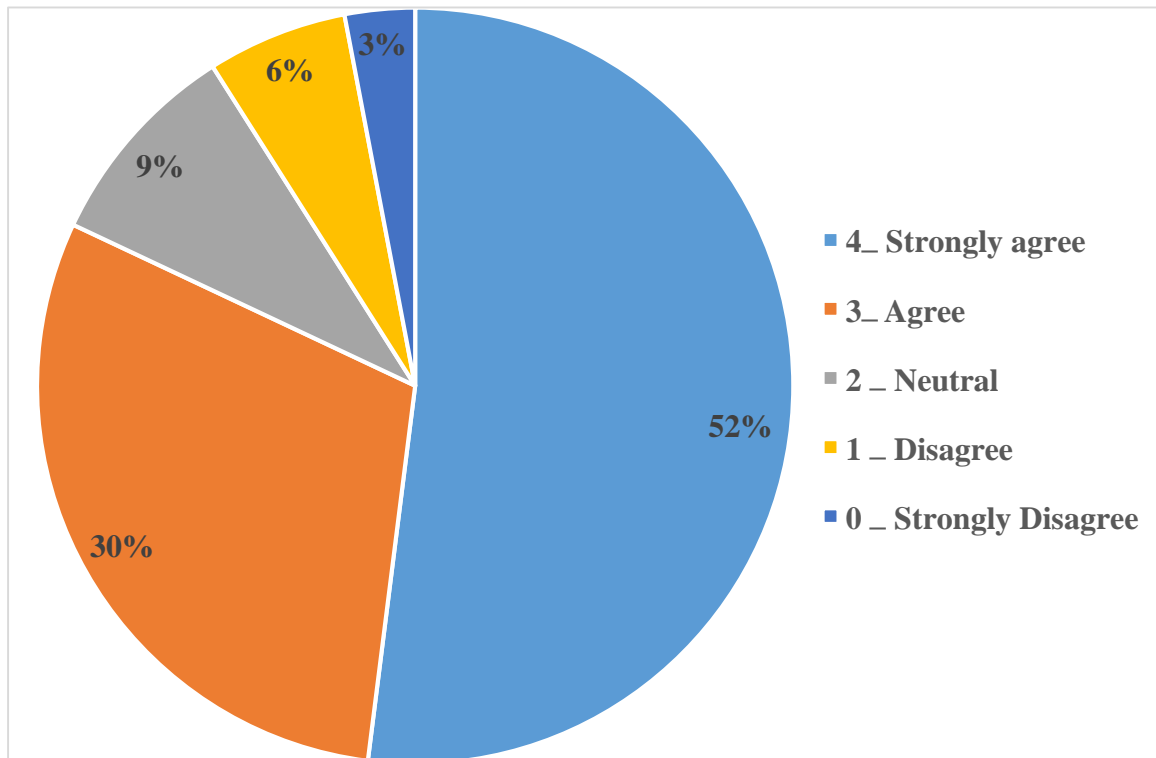
15. Effort to engage students in the monitoring, review and continuous quality improvement of the teaching learning process



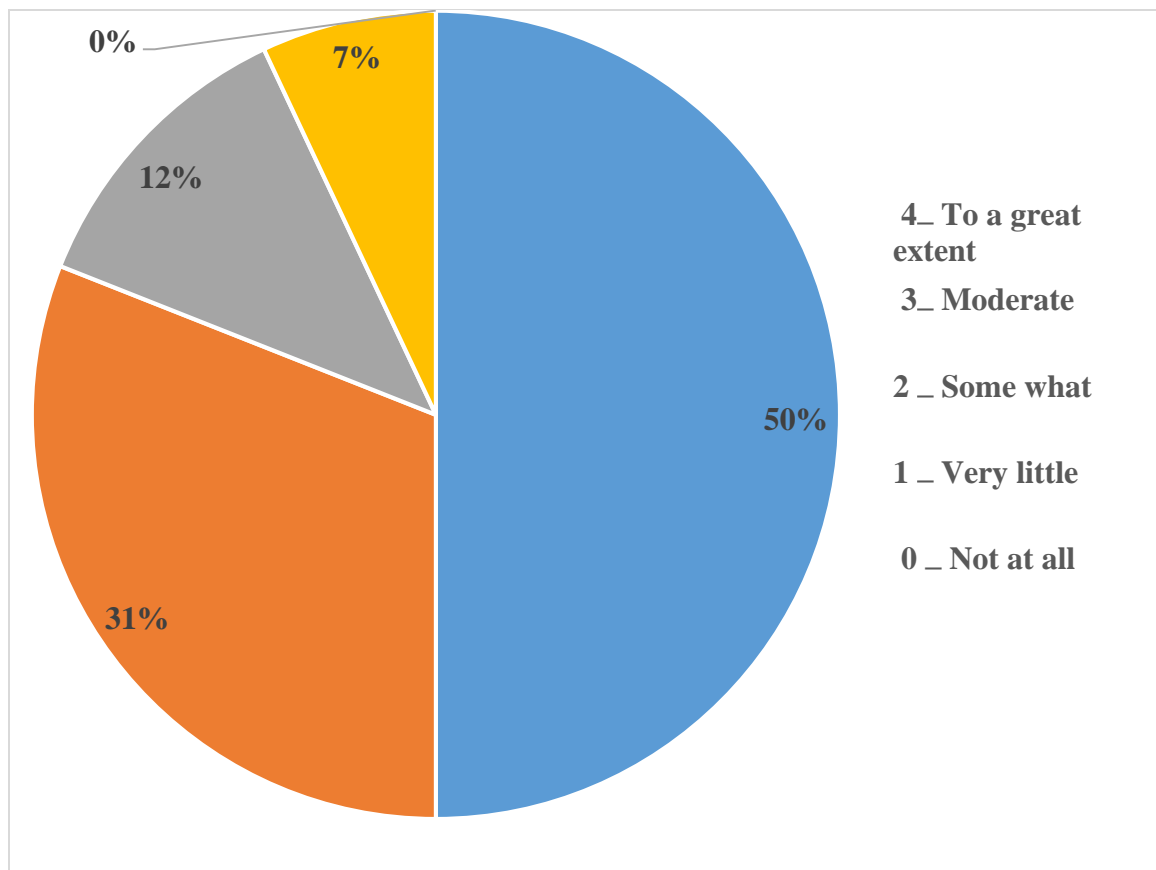
16. Use student centric methods, such as experiential learning, participative learning and problem solving methodologies for enhancing learning experiences :



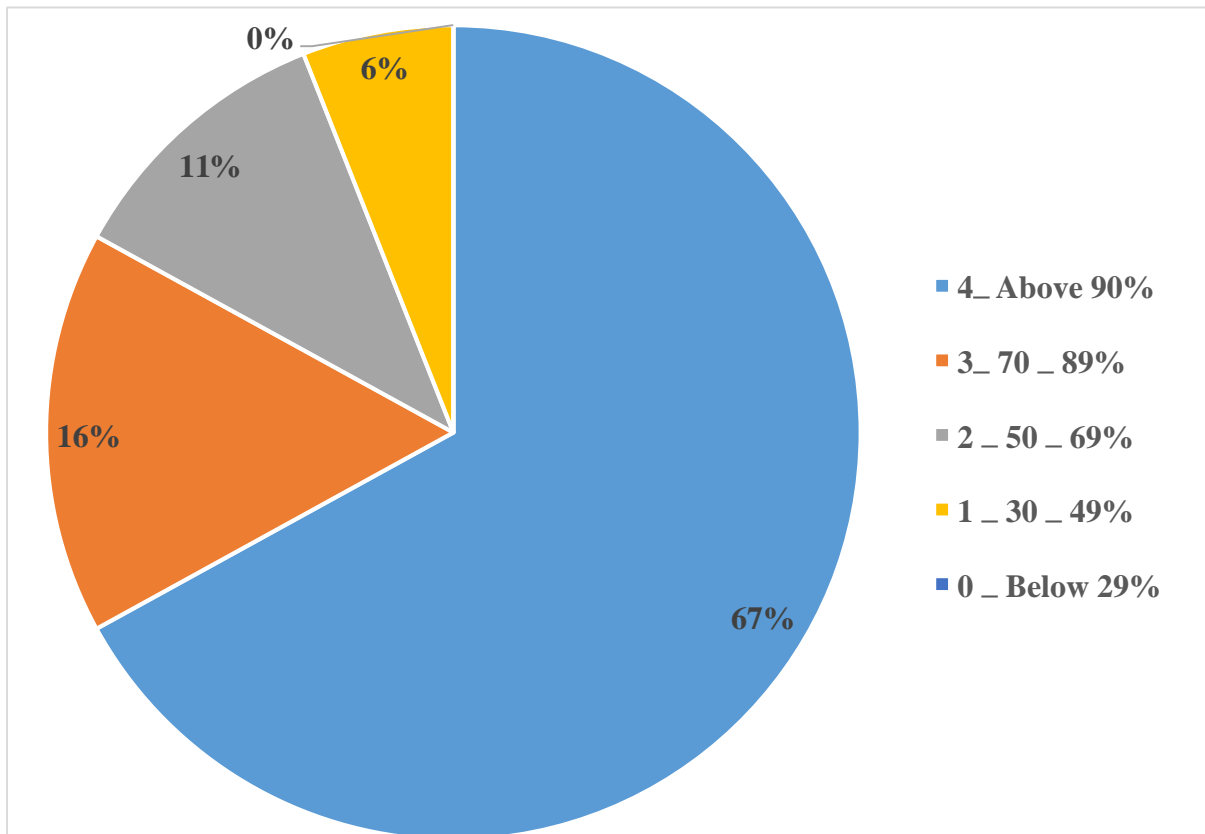
17. Encouragement of students to participate in extracurricular activities:



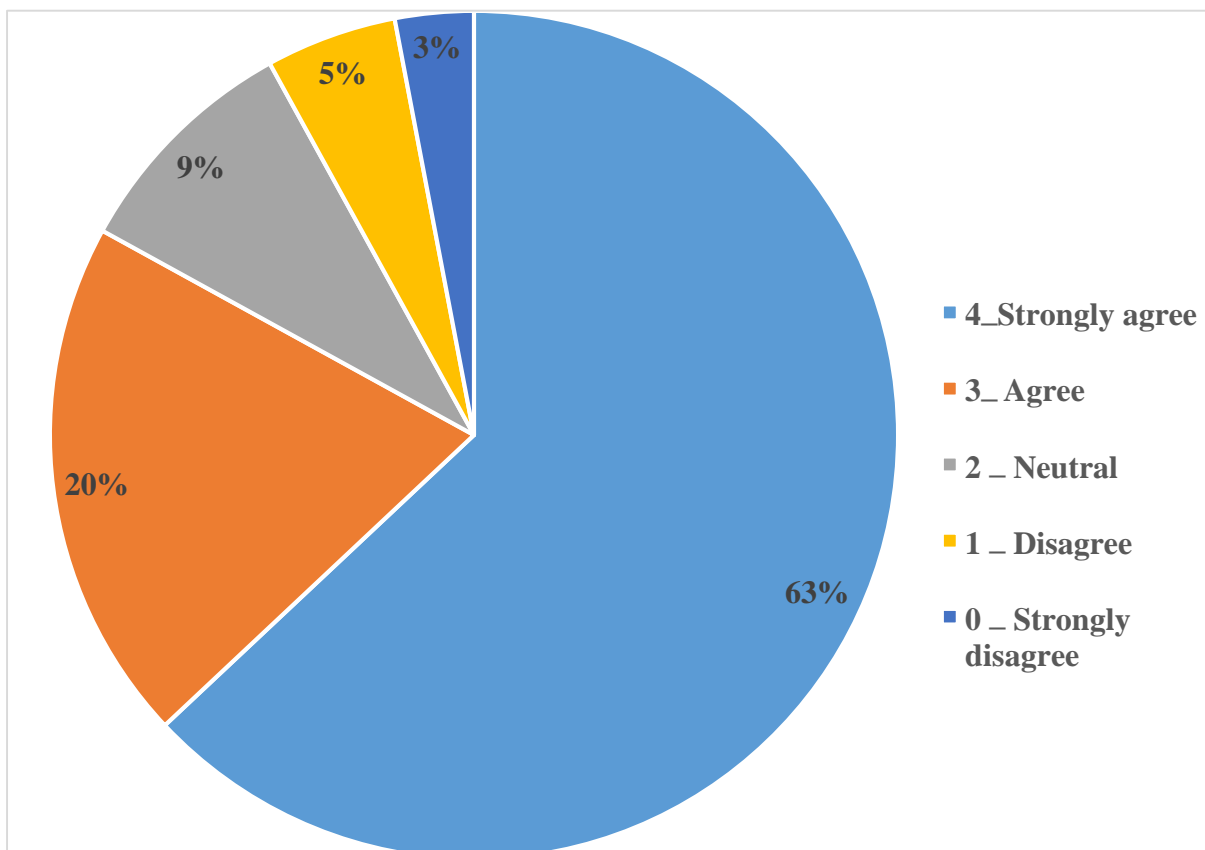
18. Inculcate soft skills, life skills and employability skills to make the student ready for employability:



19. ICT tools such as LCD projector, Multimedia:



20. Overall quality of teaching-learning process in the institute is good:



21. Key areas in which students have suggested the changes are:

- ❖ Regular class tests should be conducted.
- ❖ Improvement in placement cell.
- ❖ Purchase of latest edition of books in the College Central Library.